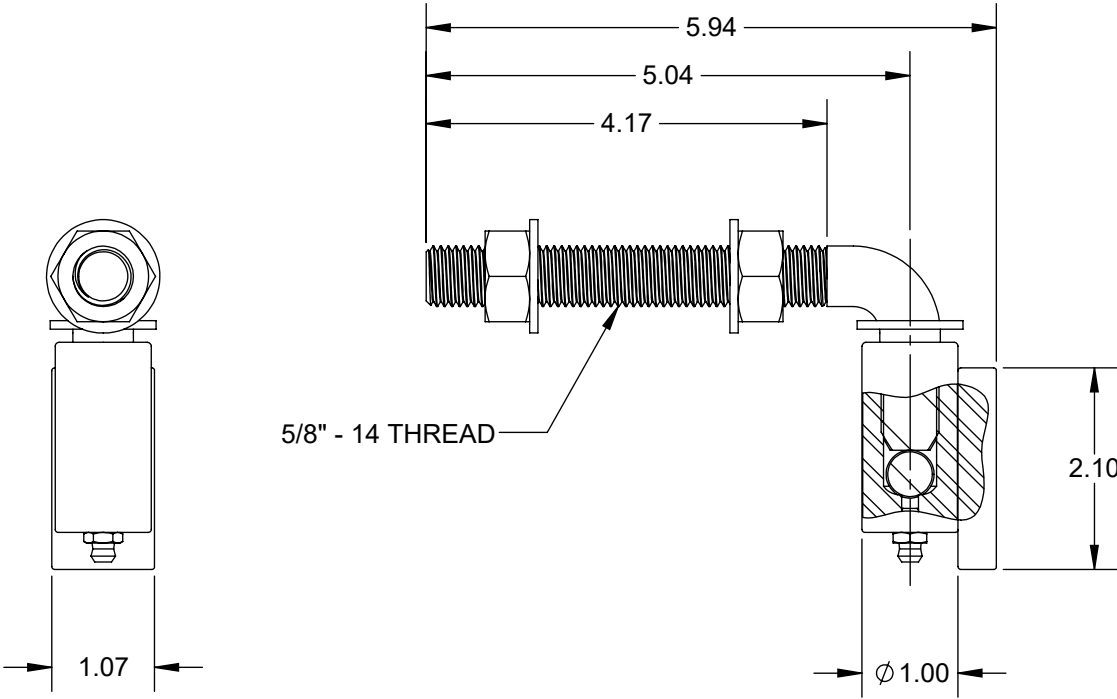



REVISION			
REV	DESCRIPTION	DATE	APPROVED
A	INITIAL RELEASE	1/12/2026	JW



NOTES:

1. FINISH:  
BALL BEARING, SHAFT, GREASE NIPPLE: ZINC PLATE  
OTHER COMPONENTS: POWDER COAT BLACK
2. BARREL HINGE IS DESIGNED FOR WELDING.

UNLESS OTHERWISE SPECIFIED:  DIMENSIONS ARE IN INCHES  TOLERANCES: .XX ±.03    .XXX ±.010  DIMENSIONS AND TOLERANCES PER ASME Y14.5M-2004  MATERIAL STEEL  FINISH SEE NOTES  DO NOT SCALE DRAWING		NAME	DATE	 <b>SECURITY BRANDS INC</b> PO BOX 743996, DALLAS, TX 75374 (USA)
	DRAWN	JW	1/12/2026	
	CHECKED	CW	1/12/2026	
	ENGINEERING	JW	1/12/2026	
	Q.A.	JC	1/12/2026	TITLE <b>5-INCH BARREL HINGE WITH J-BOLT, 5/8" X 5"</b>
<b>PROPRIETARY AND CONFIDENTIAL</b>  THE INFORMATION CONTAINED IN THIS DRAWING IS THE SOLE PROPERTY OF SECURITY BRANDS, INC. AND/OR ITS SUBSIDIARIES. REPRODUCTION IN PART OR IN WHOLE WITHOUT THE WRITTEN PERMISSION OF SECURITY BRANDS, INC. IS PROHIBITED.				SIZE <b>A</b>
			DWG. NO. <b>K-GBHA500B</b>	REV <b>A</b>
SCALE: 1:2		SHEET 1 OF 1		