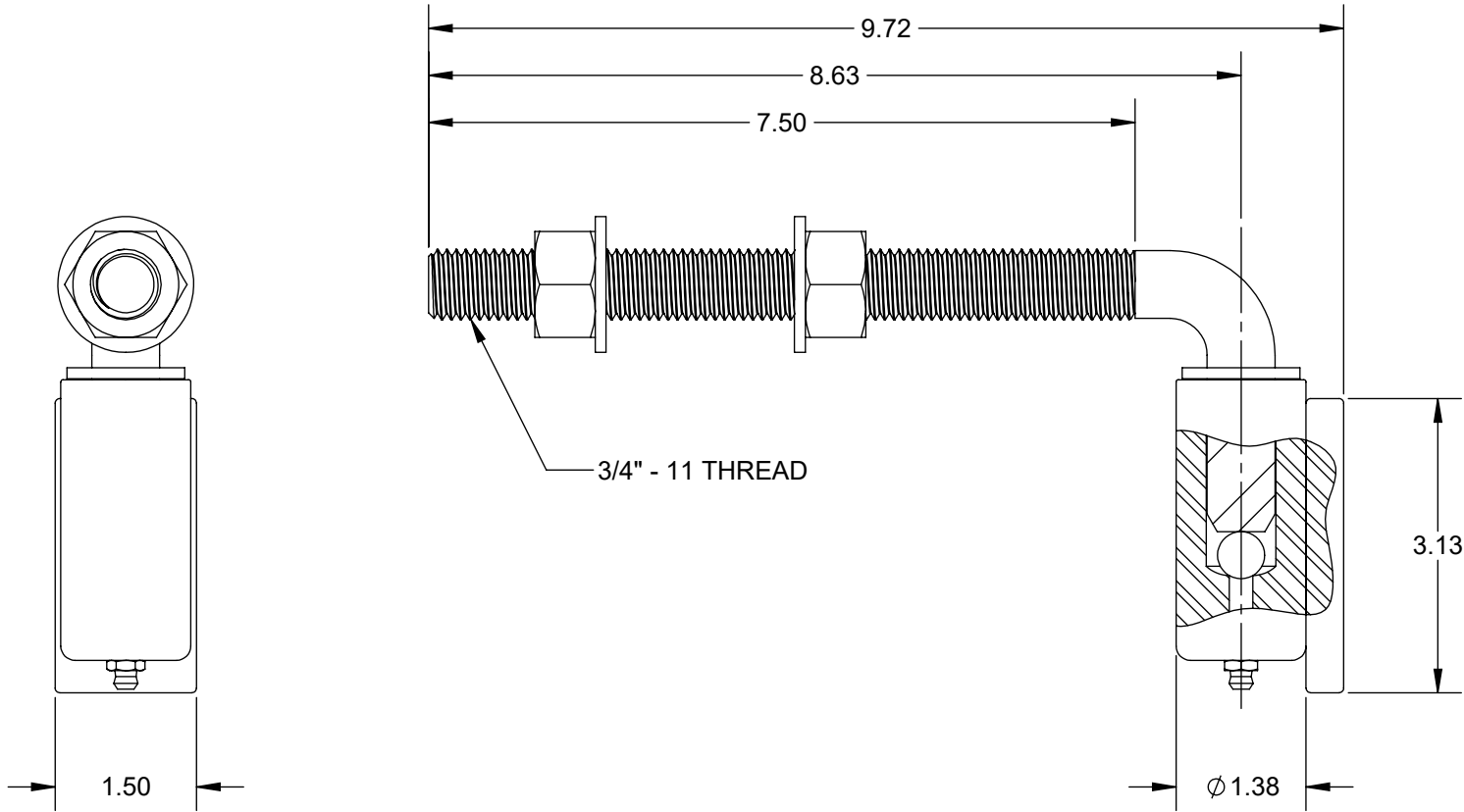



REVISION			
REV	DESCRIPTION	DATE	APPROVED
A	INITIAL RELEASE	10/21/2024	JW
B	UPDATED THREAD NOTE	1/12/2026	JW



NOTES:

1. FINISH:
BALL BEARING, SHAFT, GREASE NIPPLE: ZINC PLATE
OTHER COMPONENTS: POWDER COAT BLACK
2. BARREL HINGE IS DESIGNED FOR WELDING.

UNLESS OTHERWISE SPECIFIED:		NAME	DATE	<div> SECURITY BRANDS INC</div> <div>PO BOX 743996, DALLAS, TX 75374 (USA)</div>			
DIMENSIONS ARE IN INCHES		DRAWN	JW				10/21/2024
TOLERANCES: .XX ±.03 .XXX ±.010		CHECKED	CB				10/21/2024
		ENGINEERING	JW				10/21/2024
		Q.A.	-		<div>TITLE</div> <div>7-INCH BARREL HINGE WITH J-BOLT, 3/4" X 8-5/8"</div>		
DIMENSIONS AND TOLERANCES PER ASME Y14.5M-2004		<div>PROPRIETARY AND CONFIDENTIAL</div> <div>THE INFORMATION CONTAINED IN THIS DRAWING IS THE SOLE PROPERTY OF SECURITY BRANDS, INC. AND/OR ITS SUBSIDIARIES. REPRODUCTION IN PART OR IN WHOLE WITHOUT THE WRITTEN PERMISSION OF SECURITY BRANDS, INC. IS PROHIBITED.</div>					
MATERIAL STEEL							
FINISH SEE NOTES							
DO NOT SCALE DRAWING							
				SIZE	DWG. NO.	REV	
				A	K-GBHA700B	A	
				SCALE: 1:2		SHEET 1 OF 1	