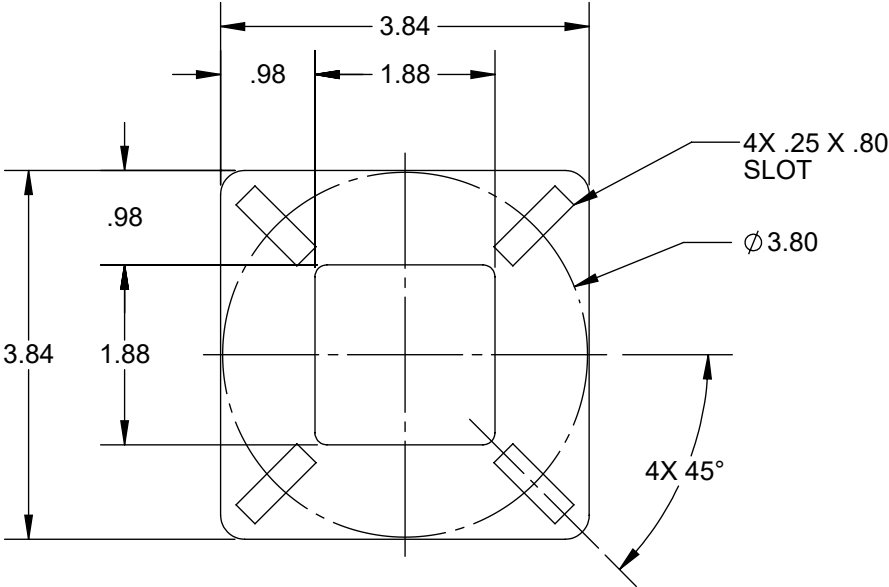


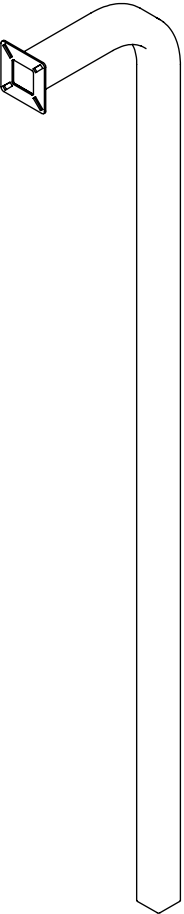
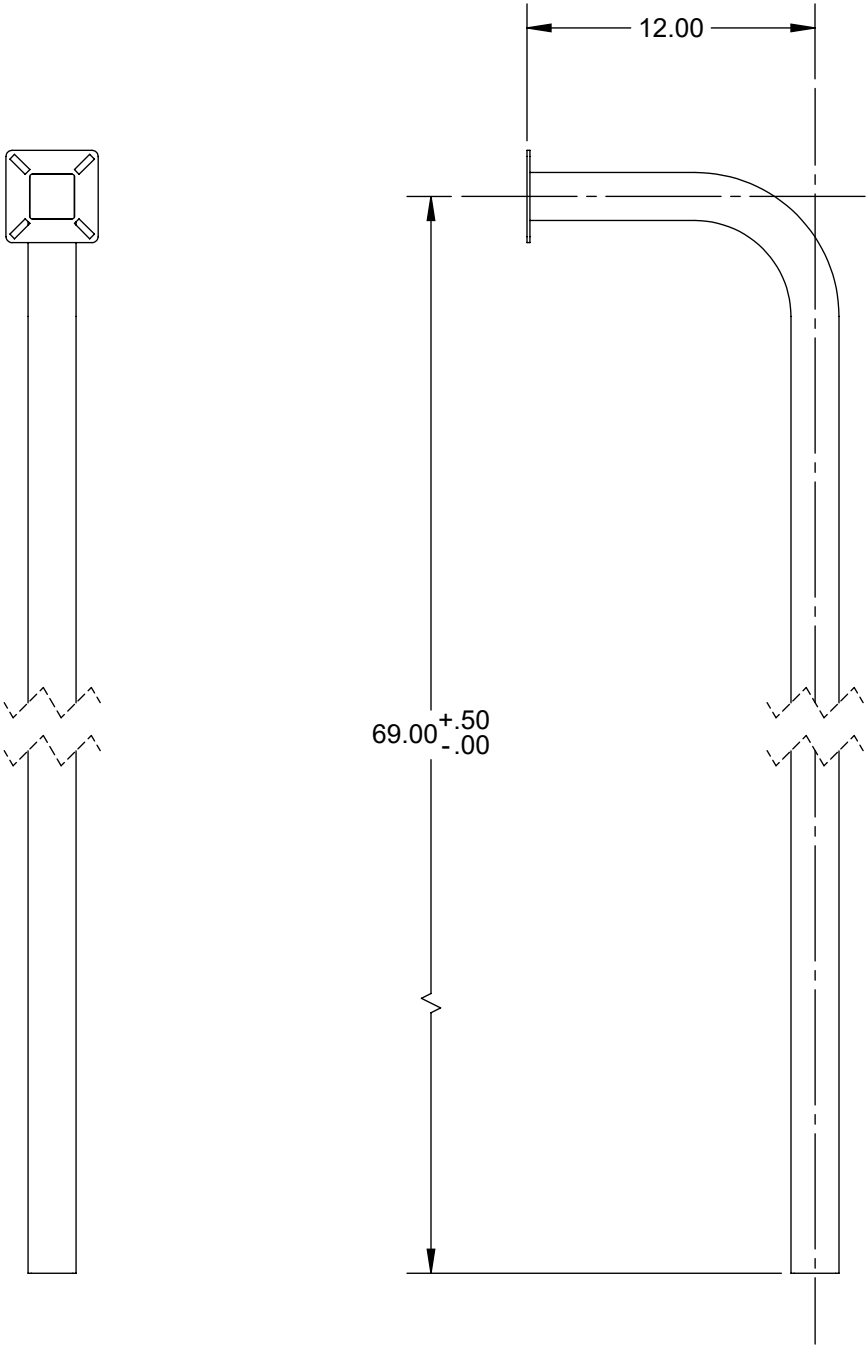
NOTES:


1. PREVIOUS MODEL NUMBERS: 18-011, 18-72IS
2. MATERIAL: POST: STEEL, 14 GA; MOUNTING PLATE: STEEL, 12 GA
3. FINISH: POWDER COAT, BLACK

REVISION			
REV	DESCRIPTION	DATE	APPROVED
A	INITIAL RELEASE	10/22/2024	JW



MOUNTING PLATE
SCALE: 1:2



UNLESS OTHERWISE SPECIFIED:		NAME	DATE	<div> SECURITY BRANDS INC PO BOX 743996, DALLAS, TX 75374, USA</div>		
DIMENSIONS ARE IN INCHES TOLERANCES: FRACTIONAL ±1/16 ANGULAR: MACH ±1° BEND ±3° .XX ±.03 .XXX ±.010		DRAWN	JW	10/22/2024	TITLE PEDESTAL, IN GROUND, CAR HEIGHT, STEEL	
		CHECKED	CB	10/22/2024		
		ENGINEERING	JW	10/22/2024		
DIMENSIONS AND TOLERANCES PER ASME Y14.5M-2004		Q.A.	JC	10/22/2024		SIZE B
PROPRIETARY AND CONFIDENTIAL THE INFORMATION CONTAINED IN THIS DRAWING IS THE SOLE PROPERTY OF SECURITY BRANDS, INC. AND/OR ITS SUBSIDIARIES. REPRODUCTION IN PART OR IN WHOLE WITHOUT THE WRITTEN PERMISSION OF SECURITY BRANDS, INC. IS PROHIBITED.					DWG. NO. 18-72GRST	
MATERIAL SEE NOTES					REV A	
FINISH SEE NOTES						
DO NOT SCALE DRAWING					SCALE: 1:8	SHEET 1 OF 1