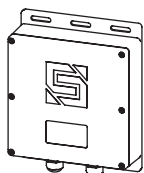
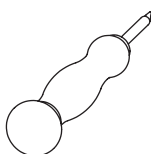


START HERE**1**

Unpack box and make sure you have all items shown here.



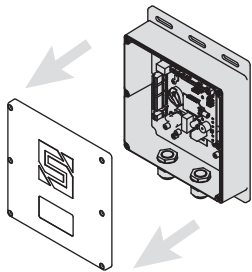
Controller



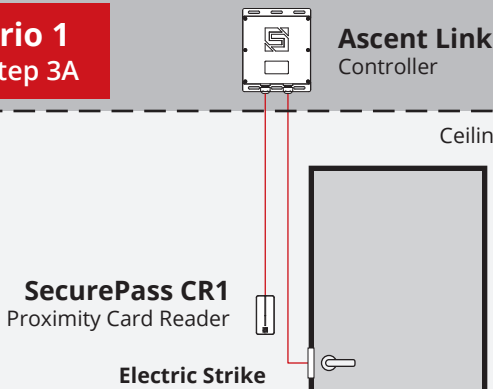
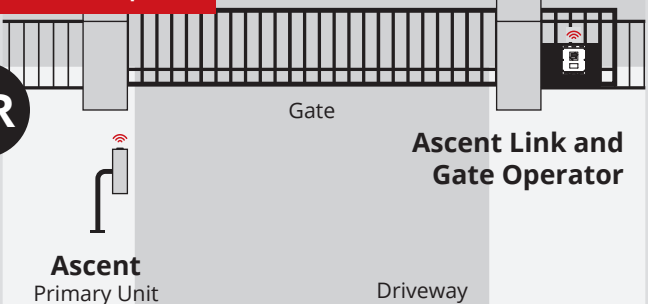
Screwdriver

**WARNING****AUTOMATIC GATES CAN CAUSE SERIOUS INJURY OR DEATH!****ALWAYS CHECK THAT THE GATE PATH IS CLEAR BEFORE OPERATING!****REVERSING OR OTHER SAFETY DEVICES SHOULD ALWAYS BE USED!****2**

Remove screws and open unit cover for wiring and setup.

**IMPORTANT**This Ascent unit **WILL NOT WORK** without an Ascent primary controller (not included)!If you need help or have any questions, please contact **Summit Control** at **(972) 474-6422**.**IMPORTANT**This Ascent Link unit is a 900-MHz device designed to work well **up to 100 feet**.If you need greater range, you will need to purchase an **Ascent Link Extend (37-LE1)**.We also offer the **Ascent Link 1000-Foot Starter Kit (37-STAK2)** with all you need to connect your Ascent cellular unit as well as an Ascent Link Extend.**STOP**This is a cellular accessory for a gate or door. An uninterrupted cellular connection **CANNOT BE GUARANTEED!**An emergency egress or primary entry mechanism **SHOULD ALWAYS BE USED!** (transmitter, fire box, mechanical release)

Consult with your dealer, distributor, and/or system designer for more information.

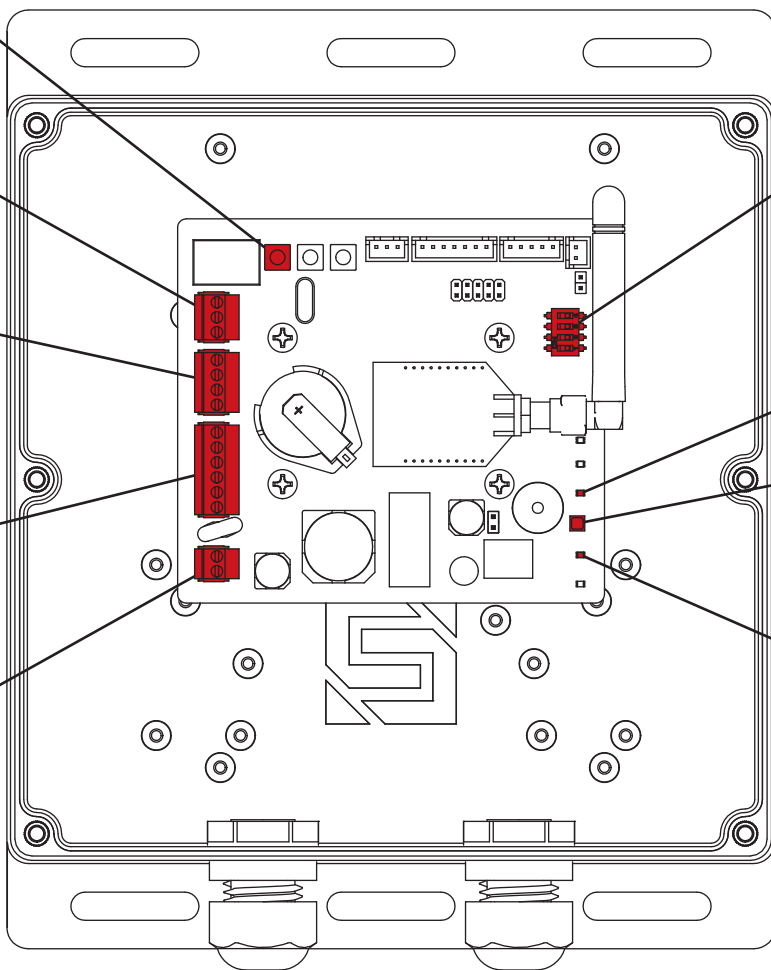
Scenario 1
Go to Step 3A**Scenario 2**
Go to Step 3B

What's what?

All important components labeled

Unit shown with cover removed.
Internal wiring not shown for clarity.

- Reset Button**
For reset procedures. Scan QR code on next page for instructions.
- Relay Terminals**
For wiring to gate operator or door device. See Page 2.
- Digital Input Terminals**
For connecting accessory devices. Scan QR code on next page for wiring instructions.
- Wiegand Terminals**
For wiring to Wiegand devices. See Page 2.
- Power Terminals**
For wiring to power. See Page 2.

**DIP Switches**
For pairing with primary unit. See Page 2.**Power Indicator LED****Network Status LED**
Status indicated by color:
Blue - connected to primary unit
Magenta (solid) - connected to Link unit but not primary unit
Magenta (flash) - no connection**Relay Status LED**
Relay is active when lit**CAUTION**

Tighten both cable glands, and seal any openings created in the enclosure.

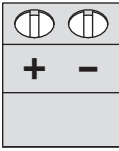
Failure to follow these instructions can damage the unit!**NEED HELP**Call **(972) 474-6422**
Email **support@summitcontrol.com**
We are available **Mon-Fri / 8am-5pm Central****FLIP PAGE TO CONTINUE**

A3

Connect to card reader and strike / mag lock.

Feed wires through one or both cable glands, and connect as shown using included screwdriver.

Suitable 12-VDC Power Supply
(not included)

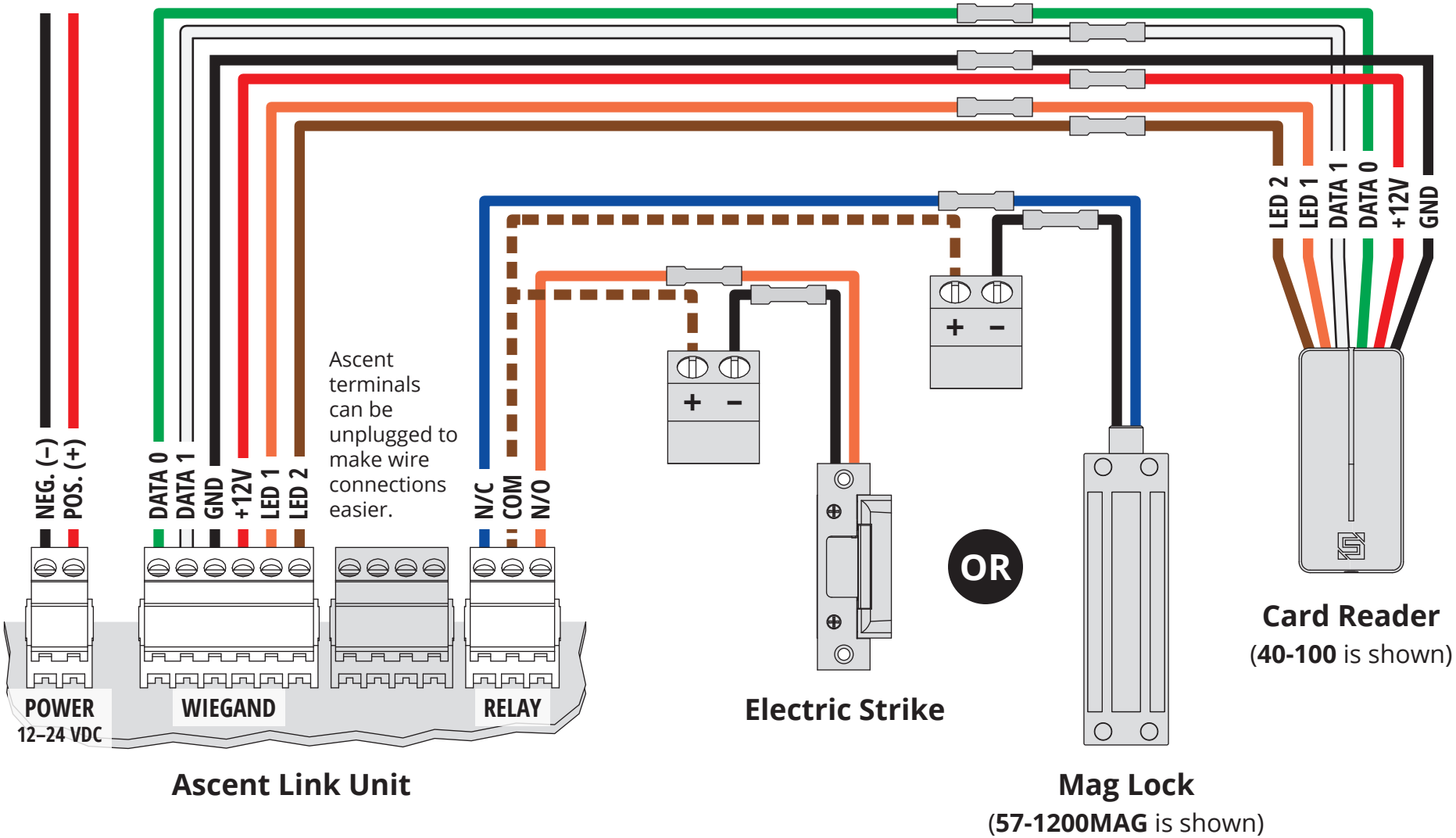


External Power Source
(12-24-VDC)

CAUTION

Disconnect power before connecting Wiegand devices.

Failure to disconnect power can damage the unit!



B3

Connect to relay.

Feed wires through one or both cable glands, and connect as shown using included screwdriver.

Suitable 12-VDC Power Supply
(not included)

We recommend using 18-gauge stranded wire for all connections.

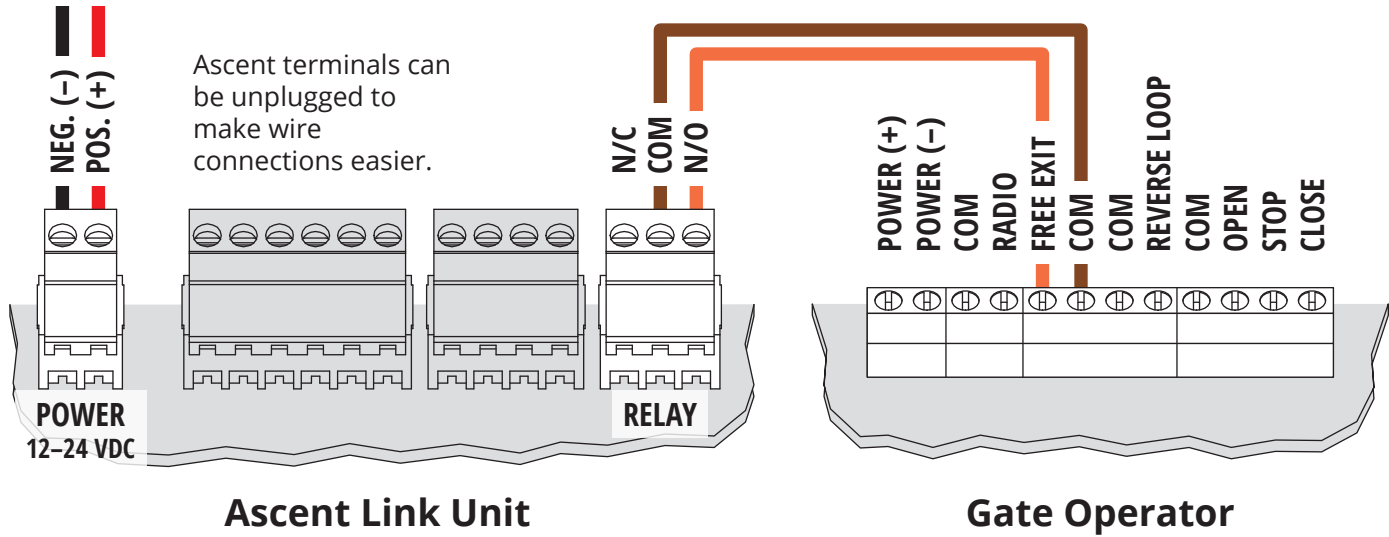
Consult gate opener manual for exact connections. Terminals vary widely across manufacturers/models.

Use QR code on this page for additional wiring diagrams.

CAUTION

When connecting the power supply, remember to connect positive to positive and negative to negative to avoid damage.

Reversing polarity can damage the unit and void the warranty!



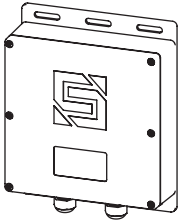
More Resources



4 Match DIP switches on keypad unit with DIP switches on primary unit to get units ready for pairing. (Default is 1 off, 2 on, 3 on, 4 off.)



5 Confirm primary and Ascent Link units have power, and then scan QR code for help completing pairing process.



Ascent Link Unit



Primary Unit



INSTALLATION COMPLETE!

Your new Ascent Link unit is ready to use.