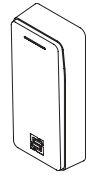


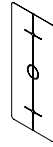


1

Unpack box and make sure you have all items shown here.
(Hex nuts and screws for faceplate mounting included with faceplate)



Reader



Adhesive
Template



Mounting Screw
(2x)



Wall Anchor
(2x)



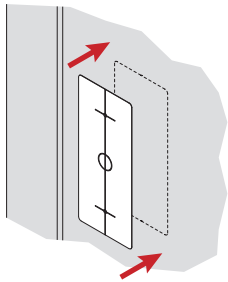
L Key



Set-Screw Cover

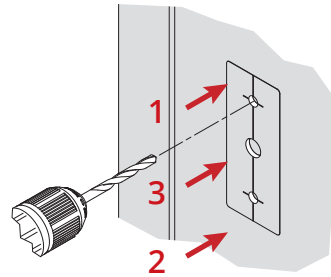
2

Attach included Adhesive Template to mounting surface where required.



3

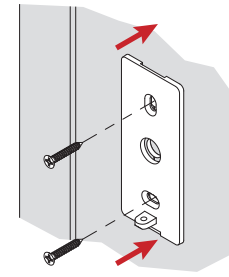
Drill mounting and pass-through holes per Template. Mounting holes are not required if not using Wall Anchors.



Use 7/16" (6 mm) bit for mounting holes and drill to a depth of 1-1/8" (30 mm).
Use 3/8" (10 mm) bit for pass-through hole.

4

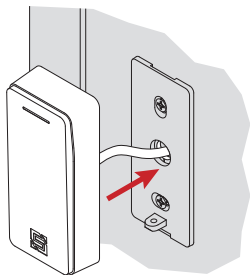
Gently tap in Wall Anchors (if using) with a hammer, and then attach Reader Base with Mounting Screws.



Remove Set Screw from Reader using included L Key to separate Reader from Reader Base.
Set Reader aside.

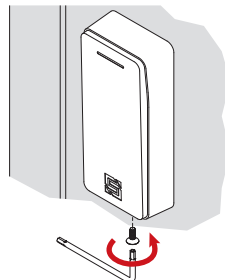
5

Feed Reader cable through pass-through hole, and connect Reader to Wiegand controller (not included).



6

Hang Reader on Reader Base, ease into place, and install Set Screw using included L Key.



Adhere Set-Screw Cover if desired.

7

Power up Wiegand controller, and make sure Reader is working correctly by scanning a valid card (not included).

