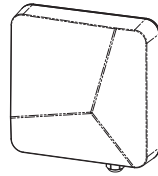


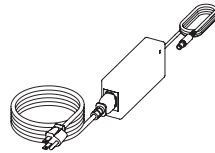
START HERE

1

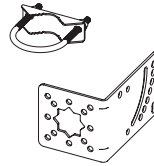
Unpack box and make sure you have all items shown here.
(Attached wiring not shown)



Reader



Power Supply



Post-Mount Bracket
w/ U-Bolt



Surface-Mount
Bracket



IMPORTANT

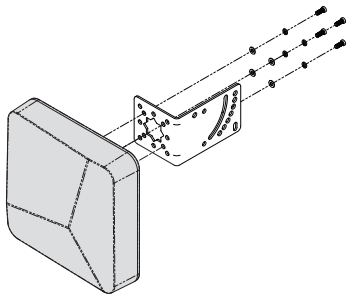


If mounting the tag reader to a post or other round pipe, proceed to **Step A2**.

If mounting the tag reader to a surface like a wall, proceed to **Step B2**.

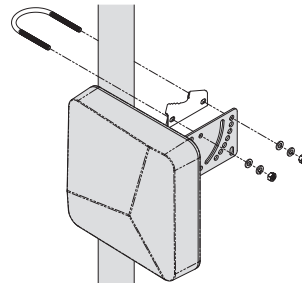
A2

Attach Post-Mount Bracket to Reader using screws and washers already attached to back of Reader.



A3

Mount Reader to post (not included). Attach and secure U-bolt using set of holes for desired angle of mounting.



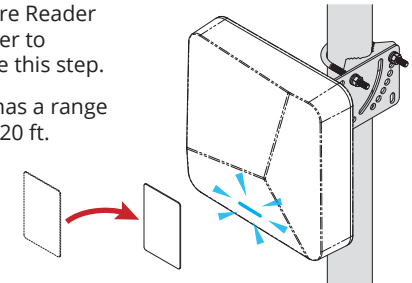
Holes are available for mounting Reader at 10-degree increments from 0 to 60 degrees.

A4

Wire up Reader (see next page), and make sure Reader is working correctly by scanning a valid tag (not included).

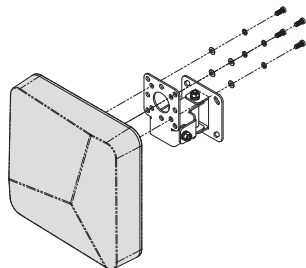
Make sure Reader has power to complete this step.

Reader has a range of up to 20 ft.



B2

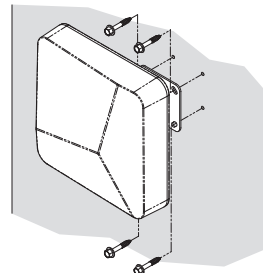
Attach Surface-Mount Bracket to Reader using screws and washers already attached to back of Reader.



B3

Mount Reader to surface using lag or Tek screws (not included). Position and secure Reader at desired angle.

Bracket swivels left and right as well as up and down for perfect positioning.

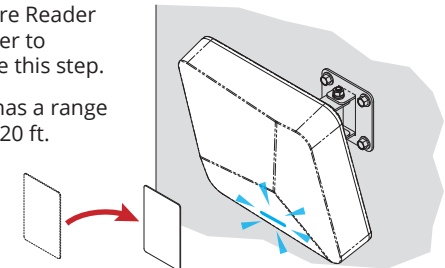


B4

Wire up Reader (see next page), and make sure Reader is working correctly by scanning a valid tag (not included).

Make sure Reader has power to complete this step.

Reader has a range of up to 20 ft.



C1

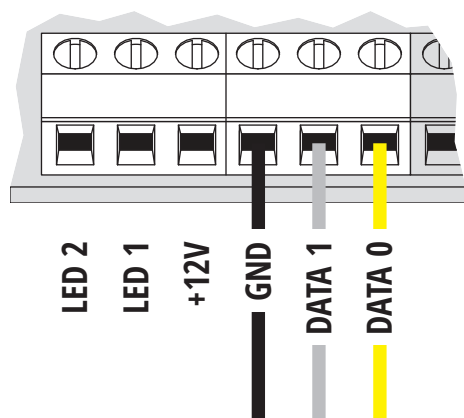
Connect wires.

(For most Wiegand controllers and simple relay "trigger" setups)

Wiegand Setup

Wiegand Controller

Edge (27-210) "Wiegand 1" Terminals Shown



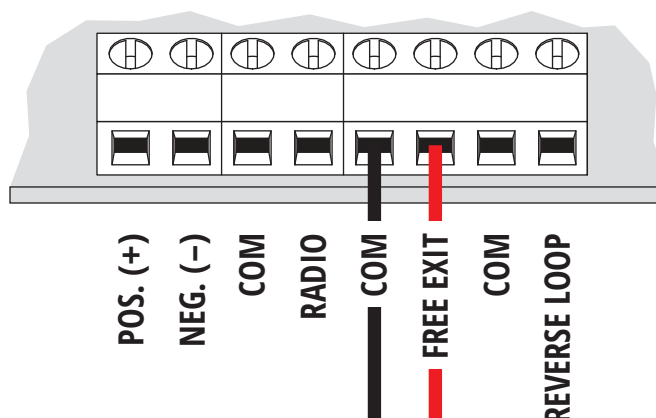
From SecurePass TR1 Reader

OR

Simple Relay Setup

Gate Operator / Door Opener

Generic Terminal Blocks



From SecurePass TR1 Reader

Reader Wire Harness Guide

Yellow	Data 0
Gray	Data 1
Red	Trigger +
Black	Trigger - / Ground (GND)

⚠ CAUTION! If connecting as a Simple Relay Setup, the onboard relay will trigger whenever a valid tag is read, without any validation.

❗ IMPORTANT! Refer to your Wiegand controller manual for wiring details.

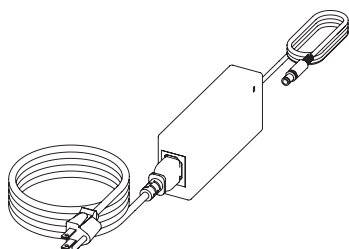
❗ IMPORTANT! The black wire can be either **Ground (GND)** or **Trigger -** depending on the installation type.

Consult gate operator or door opener manual for exact connections.

Terminals vary widely across manufacturers and models.

C2

Connect Power Supply to Reader wire harness. When ready to power on Reader, plug into power.



WARNING



AUTOMATIC GATES CAN CAUSE SERIOUS INJURY OR DEATH!

ALWAYS CHECK THAT THE GATE PATH IS CLEAR BEFORE OPERATING!

REVERSING OR OTHER SAFETY DEVICES SHOULD ALWAYS BE USED!

NEED HELP

Call (972) 474-6390

Email techsupport@securitybrandsinc.com

We are available **Mon-Fri / 8am-5pm Central**



SECURITY BRANDS INC.