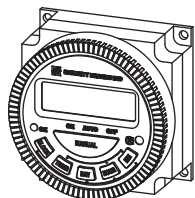




IN THE BOX

Make sure you have everything shown here.



Timer Unit



Extra Battery



Spade Connector
(5x)

Multi-tool is also included.

GENERAL INFO

7-day timers are available in the following models:

55-T12 12-Volt DC Timer

55-T24 24-Volt AC/DC Timer

55-T110 110-Volt AC Timer

Input voltage depends on the model. Please verify the model you have before proceeding. The model number can be found on the back of the timer housing.

These timers allow storage of up to 17 on/off events per day and 15 different daily program schedules, allowing for maximum flexibility (see **Figure 2**).

NOTE: Program options shown on timer display are ordered as shown in Figure 2 but are not numbered.

All timers come equipped with a form "C" relay rated for 16 A @ 30 VDC.

All timers feature a fully replaceable backup battery for seamless operation in the event of a power outage.

Two-Year Limited Warranty

Visit securitybrandsinc.com/warranty/ for details



NEED
HELP

call
(972) 474-6390

or email
techsupport@securitybrandsinc.com

BUTTONS/INDICATORS

CLOCK: to adjust day and time; must be pressed and held to allow use of day and time buttons

TIMER: to set up and review programmed events

DAY: to adjust day of week

HOUR: to adjust hour

MIN: to adjust minutes

MANUAL: to select between **ON/AUTO/OFF** modes (current mode indicated by bar on display)

Modes:

ON: relay is active

AUTO: timer will follow user-specified programs

OFF: relay inactive; no programs will be followed

ON (LED): indicates relay status (LED is on when relay is active and off when inactive)

: to power on timer for first time or reset settings

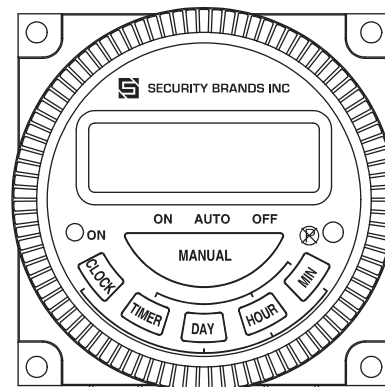


Figure 1: Front Panel

1	MO	TU	WE	TH	FR	SA	SU
2	MO	TU	WE	TH	FR	SA	
3	MO	TU	WE	TH	FR		
4						SA	SU
5	MO	TU	WE		FR		
6		TU		TH		SA	
7	MO		WE				
8				TH	FR	SA	
9	MO						
10		TU					
11			WE				
12				TH			
13					FR		
14						SA	
15							SU

Figure 2: Daily Program Schedules

TIMER OPERATION

POWER ON TIMER

Press **ⓧ** to power on timer for first time.

SETTING DATE AND TIME

Press and hold **CLOCK**; then use **DAY**, **HOURL**, and **MIN** buttons to set date and time.

PROGRAMMING EVENT 1

1. Press **TIMER**. **1 ON --:--** will appear on display unless a time is already stored in memory.
2. Press **DAY** until desired daily program schedule is indicated on display (See **Figure 1**).
3. Press **HOURL** and **MIN** to set desired ON time.
4. Press **TIMER** button again. **1 OFF --:--** will appear on display unless a time is already stored in memory.
5. Set desired OFF time as in Steps 2 and 3.

PROGRAMMING EVENTS 2-17

Repeat steps as in **Programming Event 1**.

EXITING PROGRAMMING MODE

Once all events are programmed, press **CLOCK** to exit programming mode.

ACTIVATING TIMER FOR AUTOMATIC USE

Press **MANUAL** button until indicator bar on display appears above **AUTO**.

REVIEW PROGRAMMED EVENTS

Press **TIMER** button to see first event programmed. Repeat to review each event.

NOTE: If an ON time is set, a corresponding OFF time must also be set.

NOTE: Timer will exit programming mode automatically after 20 seconds of inactivity.

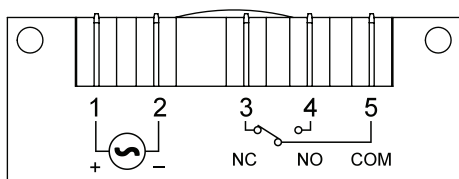


Figure 3: Wire Connections (back of unit)

WIRE CONNECTIONS

NOTE: Use included spade connectors for all wire connections.

- 1 - Power Positive + (55-T12 = 12 VDC, 55-T24 = 24 VAC/DC, 55-T110 = 110 VAC hot)
- 2 - Power Negative - (55-T12 = 12 VDC, 55-T24 = 24 VAC/DC, 55-T110 = 110 VAC neutral)
- 3 - Timer Relay NC (Normally Closed)
- 4 - Timer Relay NO (Normally Open)
- 5 - Timer Relay COM (Common)

Refer to **Figure 3**.

REPLACING BATTERY

1. Flip unit over to back side and find battery tray (See **Figure 4**).
2. Use included multi-tool or a small screwdriver and gently pop out battery tray.
3. Replace dead battery with new battery.
4. Slide tray back in fully until it is flush with back of unit.

NOTE: This unit uses CR2032 batteries only.

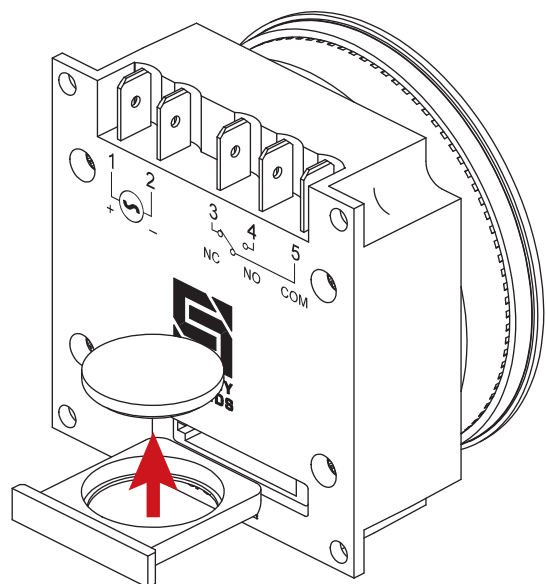


Figure 4: Battery Removal