



Summit Access Control

1675 West Yale Ave
Englewood, Co 80110
800-541-5677 Telephone
303-799-9758 Fax
sales@securitybrandsinc.com
www.summitaccesscontrol.com

Tech-Support: 1-800-541-5677
E-mail: techsupport@securitybrandsinc.com

Dual Photo Eye Infrared Beams



INSTALLATION AND PROGRAMMING INSTRUCTIONS

MODEL
S-RXTX-30B
95 ft. Outdoor Range (30m)



Summit Access Control

1675 West Yale Ave
Englewood, Co 80110
800-541-5677 Telephone
303-799-9758 Fax
sales@securitybrandsinc.com
www.summitaccesscontrol.com

Technical Support: 800-541-5677 Monday thru Friday 8:00 a.m. to 4:30 p.m. MST

Summit 2-Year Limited Warranty

What item(s) this warranty applies to:

Summit Access Control "S-RXTX-30B" access controls.

Serial # _____

What is covered:

Any defect in materials or workmanship.

For how long:

Two years from date of purchase.

What we will do:

If your Summit Access Control product is defective and returned within 2 years of the date of purchase, we will repair it or, at our option, replace it at no charge to you. If we repair your SUMMIT ACCESS CONTROL product, we may use new or reconditioned parts. If we choose to replace your SUMMIT ACCESS CONTROL product, we may replace it with a new or reconditioned one of the same or similar design. The repair or replacement will be warranted for (a) 90 days or (b) the remainder of the original two year warranty period, whichever is longer.

Limitations:

Implied warranties, including those of fitness for a particular purpose and merchant ability (an unwritten warranty that the product is fit for ordinary use), are limited to two years from date of purchase. We will not pay for loss of time, inconvenience, loss of use of your SUMMIT ACCESS CONTROL product, service calls, or property damage caused by your SUMMIT ACCESS CONTROL product or its failure to work, or any other incidental or consequential damages. Some states do not allow limitations on how long an implied warranty lasts or the exclusion or limitation of incidental or consequential damages, so the above exclusions or limitations may not apply to you.

What we ask you to do:

To get warranty service for your SUMMIT ACCESS CONTROL product, you must provide proof of the date of purchase. Contact the original dealer or installer of the product and return your SUMMIT ACCESS CONTROL product along with the receipt to them. If you have problems locating the dealer or installer contact Security Brands, Inc. at (800) 541-5677 and we will direct you to an authorized dealer or distributor of Security Brands, Inc. products. If you ship your SUMMIT ACCESS CONTROL product, you must prepay all shipping costs. We suggest that you retain your original packing material in the event you need to ship your SUMMIT ACCESS CONTROL product. On return, include your name, address, phone number, proof of date of purchase, and a brief description of the operating problem.

What this warranty does not cover:

This warranty does not cover defects resulting from accidents, damage while in transit, alterations, unauthorized repair, failure to follow instructions, misuse, fire, flood, lighting, or acts of God. Nor do we warrant your SUMMIT ACCESS CONTROL product to be compatible with any particular external device or peripheral. If your warranty has expired on your SUMMIT ACCESS CONTROL product or if your product is NOT covered contact your dealer or installer for advice on whether we will repair your SUMMIT ACCESS CONTROL product and other repair information, including estimated repair costs and other charges. We, at our option, may replace rather than repair your SUMMIT ACCESS CONTROL product with a new or similar design if the damage to the unit is severe or extensive.

This warranty is the only one we give on this product, and it sets forth all our responsibilities regarding your SUMMIT ACCESS CONTROL product. There are no other express warranties.

State Law rights:



Security Brands, Inc.

1675 West Yale

Englewood, Co 80110

800-541-5677 Telephone

303-799-9758 Fax

sales@securitybrandsinc.com

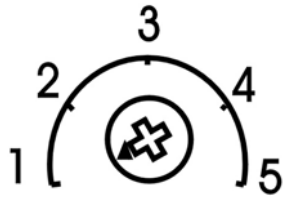
www.securitybrandsinc.com

Photo Beam Response Time Adjustment Dial

1. Verify the Transmitter and Receiver are wired correctly and the LED strength alignment is maximized.
2. Utilize the Chart Below for dial adjustment according to application.

For a Reversing Device application Response Time should be very FAST. However for an Alarm application a fast response time can cause false alarms.

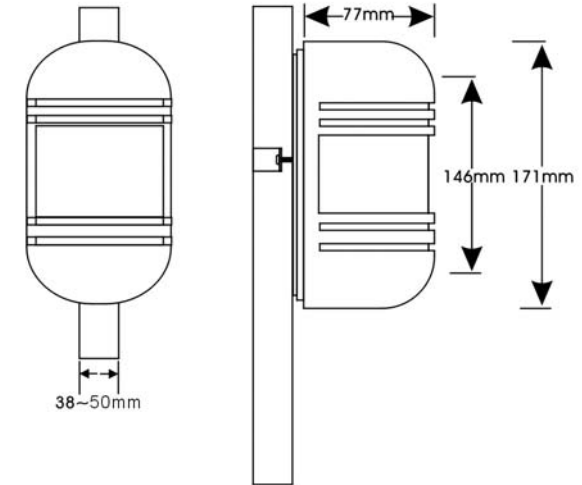
Photo Beam Response Time Chart



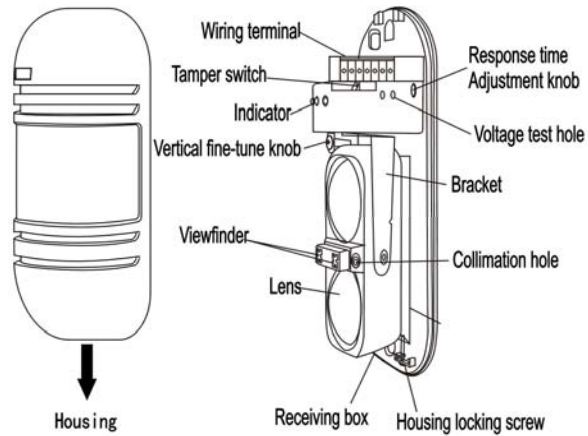
Dial Setting	Application	Response Time
1	Vehicular Traffic	Fastest
2	Fast Run	6.9 m/s
3	Quick Walk	1.2 M/S
4	Walk	.7 m/s
5	Slow Response	.4 m/s

Troubleshooting:

Situation	Possible Cause	Solution
Transmitter LED does not Light UP	Insufficient voltage and/or incorrectly wired power	Check connections and verify supply voltage in correct range 12 to 24 VAC/ VDC
Receiver LED does not light up	Insufficient voltage and/or incorrectly wired power	Check connections and verify supply voltage in correct range 12 to 24 VAC/ VDC
Receiver Alarm LED will not light when beam is interrupted	Incorrect beam alignment Response time is too short Incorrect or insufficient voltage	Re-align beams Increase the response time Re-Check voltage
Receiver alarm indicator LED ON after the beam is blocked, However NO alarm relay closer	Poor Connection or damaged wiring	Check all wiring and Terminal Strip connections
Receiver Alarm LED will not turn off	Incorrect Alignment Obstruction between beams Damaged or Dirty Cover	Re-align beams Remove any obstructions Clean or replace covers
Intermittent alarm signal output	Sensitivity is too sensitive Mounting location is bad Unstable Mounting Base Response time too short Beams blocked by moving objects	Decrease the response time Try a new mounting location Increase the height of Mounting from the ground Check for proper voltage Verify you have maximized the LED strength indicator to 5



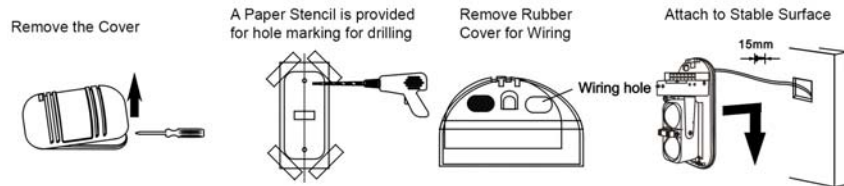
Model NO.			
S-RXTX-30B		Feet	Meters
Detecting Distance	(outdoor)	95 Feet	30 m
	(indoor)	295 Feet	90 m
Beams	2 Beams Infrared photoelectric		
Optical source	LED		
Respond speed	50 ~ 700 m sec		
Alarm output	Contact capability ACDC 30V 0.5A max		
Power input	10 - 30 VDC/VAC		
Consumption current	50mA		
Temperature Operation Range	- 25 ° C ~ 55 ° C / - 13 ° F ~ 131 ° F		
Alarm output	contact capability DC 30V 0.5 A max.		
Optical axis horizontal adjusting angle	180 ° (±90 °)		
Optical axis vertical adjusting	20 ° (±10 °)		
LED Indicator Feedback	RXTX - Green Led for Power		
	RX - Red Led for Alarm Signal		
	RX - 5 Red LED for Signal Strength		
Material	ABS Resin w/ Mounting Bracket		
Weight	2.4 Pounds		
Dimensions	3 1/8" Wide X 6 3/4" Tall X 3 1/8" Deep		



Choose a Mounting Location For Optimal Operation

- Do not mount where the transmitter or receiver could be splashed by water or mud.
- Do not mount where the unit will be exposed to extreme illumination of light. For example direct strong sunlight, outdoor lighting or passing traffic.
- Do not mount where animals will be able to break both beams
- Do not mount lower than 33" from the ground to avoid grass, small animals, snow build up and water spray from traffic.
- Do not mount to unsecure or flexible materials

Mounting Photo Eye



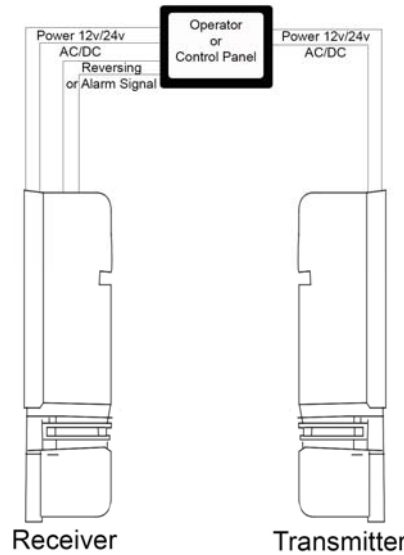
Cable Size/Wire Run Chart		
Model	S-RXTX-30B	
Wire Size	12V	24V
AWG 22	450 ft.	3300 ft.
AWG 18	1400 ft.	6800 ft.
AWG 16	2000 ft.	10244 ft.

Run correct wiring from the alarm control panel or Gate Operator to the photo beam transmitter and receiver. Shielded cable is the best option to reduce the chance of interference. If this cable will be outdoors and buried all cable should be run in conduit and local building codes observed.

Recommend Wire:
22 GA/ 6 Conductor Shielded multi strand

Installation Notes Wiring

Choosing the Correct Wire Size according to wire run distance

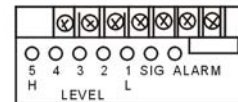
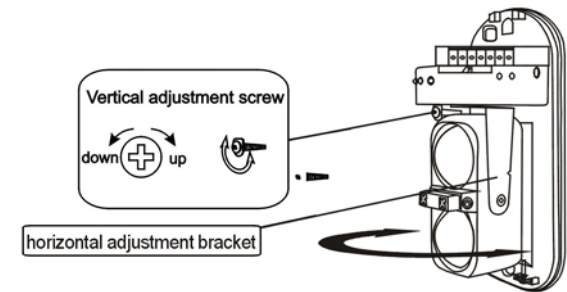
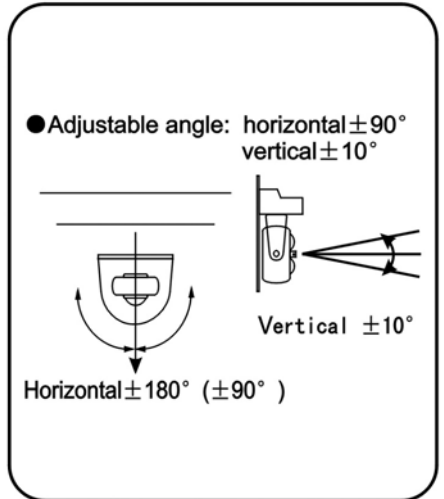


Wiring

1. Secure the terminal screws tightly to get a good connection
2. If a terminal screw is not used make sure it is securely tightened.
3. Grounding is necessary in some installation locations.
4. **FOLLOW ALL LOCAL BUILDING CODES**

Alignment Fine Adjustment

1. Adjustment of the Photo Beams is Critical to optimize performance
2. These photo beams have fine tuning screws for adjustment see below
3. Observe the LED Strength diagnostics information below to optimize performance



Receiver LED Diagnostics

Strength Indicator LED: Scale of 1 – 5, is the strongest setting 1 indicates a low beam alignment. Please adjust beam to achieve optimal beam alignment.

Alarm : Will signal a break in the photobeam resulting in an alarm state

Sig: Green Led, when no alarm is present and a good beam alignment