

# Installation and Operation Manual



## RIDGE

**BATTERY-POWERED WIRELESS KEYPAD**

**S-14-100-375UT**



your *partner* in access control

# SECURITY BRANDS, INC.

## TWO-YEAR LIMITED WARRANTY

**What item(s) this warranty applies to:**

Summit Access Control **Ridge** access control systems.

**What is covered:**

Any defect in materials or workmanship.

**For how long:**

Two years from date of purchase.

**What we will do:**

If your Summit Access Control (SAC) product is defective and returned within two years of the date of purchase, we will repair it or, at our option, replace it at no charge to you. If we repair your SAC product, we may use new or reconditioned parts. If we choose to replace your SAC product, we may replace it with a new or reconditioned one of the same or similar design. The repair or replacement will be warranted for (a) 90 days or (b) the remainder of the original two-year warranty period, whichever is longer.

**Limitations:**

Implied warranties, including those of fitness for a particular purpose and merchant ability (an unwritten warranty that the product is fit for ordinary use), are limited to two years from date of purchase. We will not pay for loss of time, inconvenience, loss of use of your SAC product, service calls, or property damage caused by your SAC product or its failure to work, or any other incidental or consequential damages. Some states do not allow limitations on how long an implied warranty lasts or the exclusion or limitation of incidental or consequential damages, so the above exclusions or limitations may not apply to you.

**What we ask you to do:**

To get warranty service for your SAC product, you must provide proof of the date of purchase. Contact the original dealer or installer of the product and return your SAC product along with the receipt to them. If you have problems locating the dealer or installer, contact Security Brands at (800) 541-5677, and we will direct you to an authorized dealer or distributor of Summit Access Control products. If you ship your SAC product, you must prepay all shipping costs. We suggest that you retain your original packing material in the event you need to ship your SAC product. On return, include your name, address, phone number, proof of date of purchase, and a brief description of the operating problem.

**What this warranty does not cover:**

This warranty does not cover defects resulting from accidents, damage while in transit, alterations, unauthorized repair, failure to follow instructions, misuse, fire, flood, or acts of God, nor do we warrant your SAC product to be compatible with any particular external device or peripheral. If your warranty has expired on your SAC product, or if your product is NOT covered, contact your dealer or installer for advice on whether we will repair your SAC product and for other repair information, including estimated repair costs and other charges. We, at our option, may replace rather than repair your SAC product with a new or similar design if the damage to the unit is severe or extensive.

This warranty is the only one we give on this product, and it sets forth all our responsibilities regarding your SAC product. There are no other express warranties.

**State Law Rights:**

This warranty gives you specific legal rights, and you may also have other rights, which vary from state to state.

**Serial #** \_\_\_\_\_

# PARTS CHECKLIST

Ensure all of the following items are present:

Qty	Description
1	Ridge digital keypad unit
4	1/4" x 3/4" carriage bolts
4	1/4"-20 hex nuts

If any of the above items are missing from this box, contact Security Brands at (800) 541-5677.

## Tools Needed for Basic Installation

- 3/8" drive ratchet with 6" extension and 7/16" socket
- Digital or analog multimeter

## TECHNICAL SUPPORT

**(303) 799-9757**

**[techsupport@securitybrandsinc.com](mailto:techsupport@securitybrandsinc.com)**

## BEFORE PROCEEDING

To take full advantage of the two-year limited warranty, you must be registered with Security Brands.

Please read the warranty statement on the previous page, fill out the warranty registration card provided, and send it to:



Security Brands, Inc.  
1675 W Yale Ave  
Englewood, CO 80110

Phone: (303) 799-9757  
Toll-Free: (800) 541-5677  
Fax: (303) 799-9756

[sales@securitybrandsinc.com](mailto:sales@securitybrandsinc.com)

**[securitybrandsinc.com](http://securitybrandsinc.com)**

# INTRODUCTION

Your new Ridge keypad is a high-quality, commercial-grade, programmable, battery-powered, wireless, digital access control system. The unit is designed to operate at extremely low current and therefore is perfect for solar applications. The Ridge operates using a standard 9-volt battery. The unit is composed of a durable polycarbonate housing to allow maximum signal performance and will last for years of worry-free operation.

## IMPORTANT!

PLEASE BE SURE TO READ AND UNDERSTAND ALL INSTRUCTIONS BEFORE PROCEEDING WITH INSTALLATION AND PROGRAMMING!

## STEP 1 - MOUNTING THE UNIT

Page 3 details the tools and instruments you will need to install your unit and includes a parts checklist. Make sure to have all the tools listed handy. Upon opening the box, ensure that all parts on the checklist are present. If any items are missing from your unit, contact Security Brands immediately at (800) 541-5677.

### Mounting the unit to your own pedestal

An optional square mounting flange can be purchased from Security Brands. The square mounting flange may be welded to your pedestal and the flange bolt pattern will align with the back of the unit. Position the unit against the flange and install the four carriage bolts from the back side. Secure the unit by tightening down the four hex nuts with a 7/16" socket.

### Mounting the unit to a Kodiak Black gooseneck pedestal (18-001) or dual pedestal (18-003)

Locate the four carriage bolts and four hex nuts included with the unit. Position the unit against the pedestal flange and install the four carriage bolts from the back side. Secure the unit by tightening down the four hex nuts with a 7/16" socket.



18-001



18-003

## STEP 2 - PROGRAMMING THE TRANSMITTER



**Transmitter Circuit Board**

This model **S-14-100-375UT** unit incorporates a radio transmitter and can be programmed to control a wide variety of garage door openers, gate operators, and commercial door operators. Please see the auxiliary instruction sheet for detailed instructions for programming the transmitter.

The digital code is determined by the positions of the 12 small DIP switches located in the receiver and the transmitter. Any combination of ON or OFF positions can be set using a pencil or pen.

**NOTE: The switches are in the ON position when the switch is toward the number.**

### MASTER CODE AND ACCESS CODES

Your unit can be programmed with 100 four-digit access codes. The MASTER CODE is a four-digit programmable code used for accessing program mode.

#### SETTING OR RESETTING THE MASTER CODE

To set or reset the master code back to the factory default of **1251** should you ever lose or forget your master code, follow these steps (see page 7 for location diagram):

- (1). Disconnect power from the unit by pulling power harness away from the board.
- (2). Press several keys on keypad to drain circuit board of power.
- (3). Reconnect power while holding down the PROGRAM/RESET button.
- (4). A single beep will be heard from the unit indicating that the master has been reset.

#### GOOD BEEPS AND ERROR BEEPS

A standard beep will be heard each time a key is pressed. A GOOD BEEP is represented by a series of quick beeps in succession. An ERROR BEEP is represented by a single long and lower-pitched beep.

#### IDLE MODE

Idle mode is the normal mode of operation. When in this mode, the unit sits and waits for data from the keypad. If a key is pressed on the keypad, you will have about five seconds between each keypress before the unit resets.

#### PROGRAM MODE

Program mode is the mode of operation in which you will enter/change your access code. Upon entry, several GOOD BEEPS will be heard. Several GOOD BEEPS will also be heard when you exit program mode unless a keypress timeout occurs, in which case you will receive an ERROR BEEP. Program mode is accessed by entering the MASTER CODE from the keypad. If the master code is valid, you will receive four GOOD BEEPS from the unit. In this mode you will have approximately 30 seconds between keypresses. If this time is exceeded, you will receive an ERROR BEEP, and the unit will exit program mode and return to idle mode. To exit program mode at any time, press #.

#### THE \* AND # KEYS

The \* and # keys serve specific functions while in either idle or program mode. The \* key is always the clear key. You should use this key if you make an entry error. The # key also serves as the clear key in idle mode. In program mode, however, it serves as the exit key and will cause the unit to exit program mode if depressed at any time.

# PROGRAMMING

A user wanting access to program mode must enter the current MASTER CODE. If the MASTER CODE is valid, a GOOD BEEP will be heard, prompting the user to enter a number corresponding to the SUB-MODE, e.g. MASTER CODE, then (number corresponding to SUB-MODE). Once in program mode, the individual will have approximately 15 seconds between keypresses, or the unit will sound an ERROR BEEP and exit program mode.

## SUB-MODES

### "1"

#### Sub-Mode 1 (Enter New Access Codes)

To enter new access codes, enter the MASTER CODE followed by 1, then enter each new access code you wish to program into the unit.

(MASTER CODE) then 1 then (ACCESS CODE) then (ACCESS CODE) etc. (# to exit)

Should you make an entry error, simply press the \* key and re-enter the correct data. You may continue entering access codes until the memory is full or the # is pressed. You may select any four-digit access code that is not already in use by the system. The unit will respond with a GOOD BEEP with the acceptance of each new access code. If you do not receive a GOOD BEEP after the entry of an access code, you must select a new access code as the one you entered is already in use by the system. When the memory is full, you will receive a GOOD BEEP indicating the acceptance of the last access code entered then will sound an ERROR BEEP and exit from program mode.

**NOTE: You will not be able to enter this mode if memory is full and will receive an ERROR BEEP.**

### "2"

#### Sub-Mode 2 (Delete Access Codes)

To delete any access code from memory, enter the MASTER CODE followed by 2, then enter each access code to be deleted.

(MASTER CODE) then 2 then (CODE TO BE DELETED) then (NEXT CODE TO BE DELETED) etc. (# to exit)

Should you make an entry error, simply press the \* key and re-enter the correct data. You may continue deleting access codes in a successive manner. The unit will respond with a GOOD BEEP with the successful deletion of each access code. If you do not receive a GOOD BEEP, the access code entered could not be found in memory, and the unit will wait for you to enter another code to be deleted.

### "3"

#### Sub-Mode 3 (Change Master Code)

To change the MASTER CODE enter the current MASTER CODE followed by 3, and then the new MASTER CODE.

(PRESENT MASTER CODE) then 3 then (NEW MASTER CODE)

Should you make an entry error, simply press the \* key and re-enter the correct data. You may select any four-digit code as your new MASTER CODE that is not already in use by the system. The unit will respond with a GOOD BEEP upon acceptance of the new MASTER CODE and exit from program mode. If the unit does not respond with a GOOD BEEP, you must select a different code, as the code entered is already in use by the system.

### "4"

#### Sub-Mode 4 (Set Relay Output Time from 0.5 to 9 seconds)

To set the relay output time in seconds enter the current MASTER CODE followed by 4, and then the relay output time in seconds. **NOTE: "0" = 0.5 seconds.**

(PRESENT MASTER CODE) then 4 then (RELAY OUTPUT TIME)

Should you make an entry error, simply press the \* key and re-enter the correct data. You may enter any single-digit value corresponding from 0.5 to 9 seconds of total length output time. Please note that when you enter 0, the output time is set to 0.5 seconds.

### "0"

#### Sub-mode 0 (Clear Memory) **WARNING! THIS MODE IS USED TO PERMANENTLY DELETE ALL ACCESS CODES!**

To delete all access codes from memory, enter the MASTER CODE followed by 0, and the re-enter the MASTER CODE

(MASTER CODE) then 0 then (MASTER CODE)

Should you make an entry error, simply press the \* key and re-enter the correct data. If the second entry of the MASTER CODE is correct, there will be a short pause, a GOOD BEEP, and then the unit will exit program mode. If the second entry of the master code is incorrect, the unit will immediately sound a GOOD BEEP and exit program mode.

**NOTE: It should not generally be necessary to erase all access codes from memory unless codes are forgotten and/or are occupying necessary memory space. Good access code maintenance should prevent the necessity of this.**

## RIDGE CIRCUIT BOARD DIAGRAM

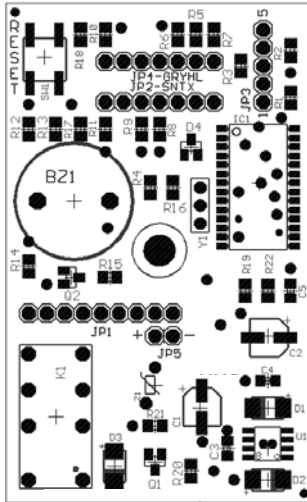
Part # 305-117

PROGRAM/RESET BUTTON

POWER/CONTROL  
HARNESS (JP1)

RELAY

MICROCONTROLLER



## CODES

**MASTER CODE:** \_\_\_\_\_

[illegible]



## TROUBLESHOOTING

Problem	Solution
When I enter 1251 on the keypad, the gate will not open.	1251 is the MASTER CODE. It will not open the gate unless the unit is in sleep mode. Program an access code into the unit using Sub-Mode 1 (see PROGRAMMING section of this manual).
The keypad does not respond.	Verify 9-volt battery is good. Contact Security Brands.
When I enter a valid access code, the gate does not open.	Check programming, and verify you are using a valid four-digit access code. Contact Security Brands.
When I press 1251 on the keypad, nothing happens, and I hear an endless set of beeps.	Contact Security Brands.
I want to reset my keypad, but when I push the RESET button nothing happens.	Consult instructions regarding MASTER and UNIT reset for proper reset sequence.

# CUSTOMER SERVICE AND TECHNICAL SUPPORT

## CUSTOMER SERVICE

**(303) 799-9757**

**customerservice@securitybrandsinc.com**

## TECHNICAL SUPPORT

**(303) 799-9757**

**techsupport@securitybrandsinc.com**

Both services are available free of charge from the hours of **8:00 a.m. to 4:30 p.m. Mountain Time.**

When you call, please have your **model** and **serial number** handy to help our technicians assist you.

## NOTES

[illegible]

Please visit us at:  
**securitybrandsinc.com**



your *partner* in access control